



TANGO

INSTALLATION GUIDE

Version 1.0

ABSTRACT

Tango is DentaForm's file processing and slicing software. The installation guide helps you to quickly install Tango and get started printing with DentaForm.

Contents

What is Tango?.....	2
System Requirements	3
Hardware	3
Software.....	3
Installing Tango	4

What is Tango?

Tango is a data preparation software for DentaForm printers.

You can use Tango to:

- import
- repair
- edit (orient, automatically nest, scale, rotate, mirror, infill, add honeycomb structure, Z-compensation, cut)
- add support
- hollow
- label
- set printer profile settings (scaling/shrinkage compensation, tolerance/offset, anti-aliasing)
- slice,
- export as SPJ format, and much more.

Tango allows you to slice and export your STL file to an SPJ file (DentaForm's proprietary file format). You can either remotely send it to your printer (using MyStructo software) or physically carry the file (using a USB drive) to the DentaForm printer.

System Requirements

Hardware

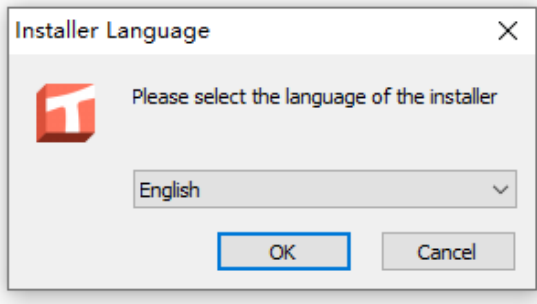
CPU	Intel Core i5/i7/i9
	AMD Phenom II X4/X6 AT 3.0GHz or higher with SSE2
Memory	16 GB RAM or higher
Free Disk Space	2GB of free disk
Display	1920X1080 resolution or higher
	2560X1440 is recommended
Video Card	NVIDIA GeForce GTX 1060 or AMD Radeon RX 480 or better
	At least 1GB of memory
	At least a memory interface width of 192-bit (256-bit is recommended)
	Any Intel chipset is not recommended

Software

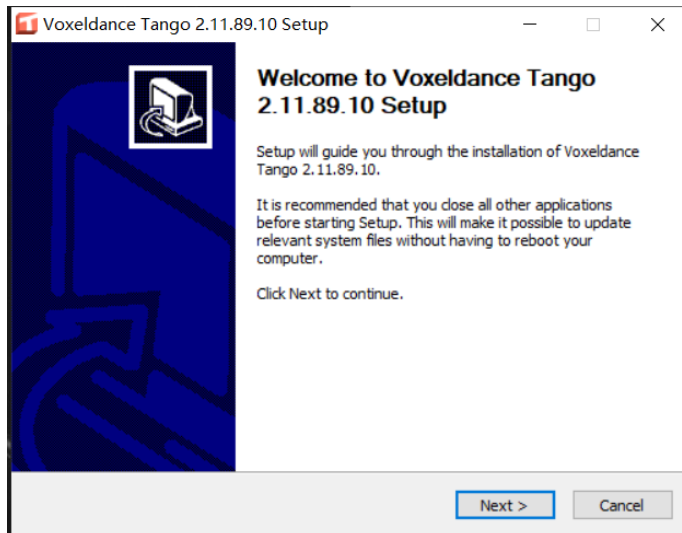
Processor	Windows 64-bit
OS	Windows 10 and higher (recommended)
	Windows 8/8.1
	Windows 7 SP1 or later

Installing Tango

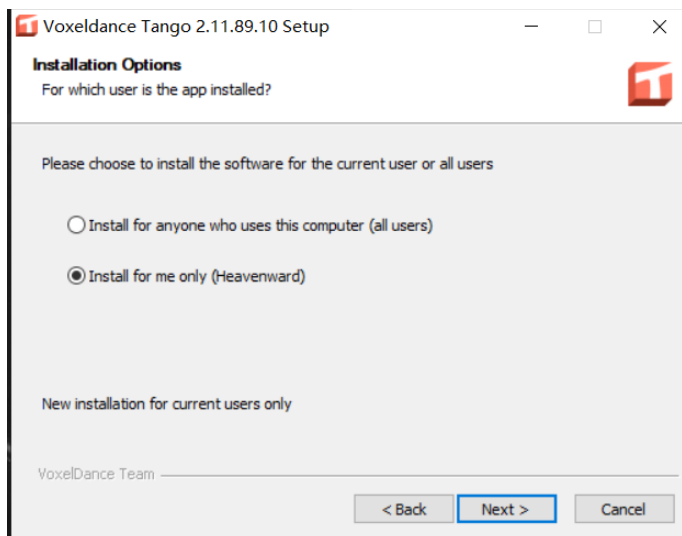
1. Click on the installation file.
2. In the installation wizard, choose your preferred language.



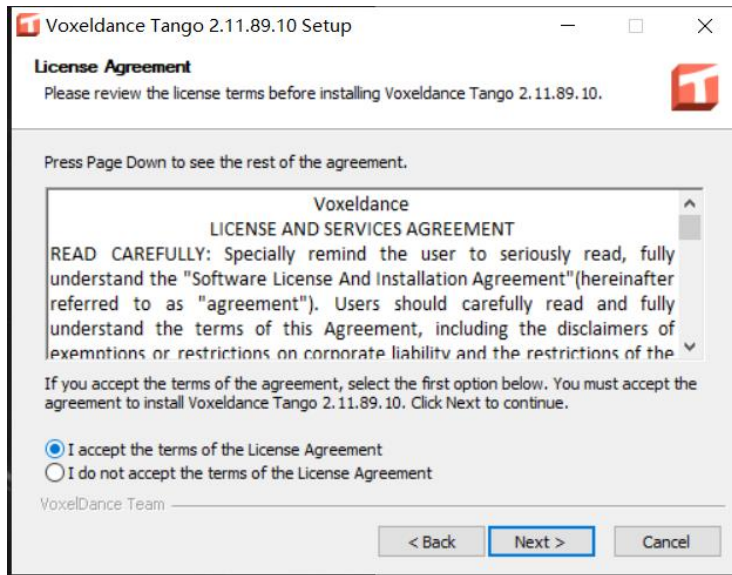
3. Click on Next to continue.



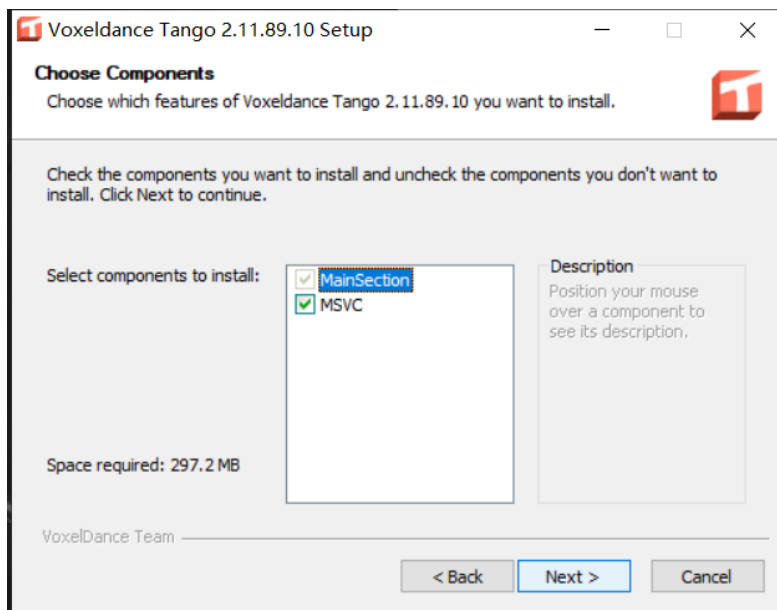
4. Select the scope of your users who can use Tango and click Next.



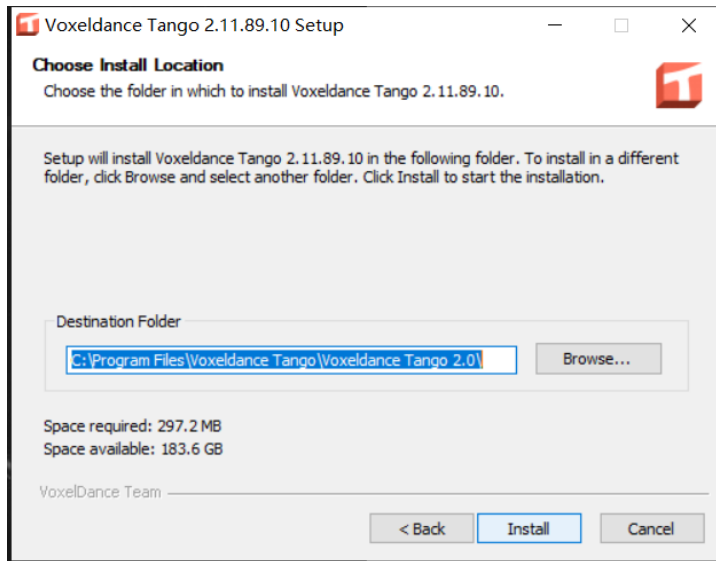
5. Read the license agreement and click Next after you have accepted the terms and conditions.



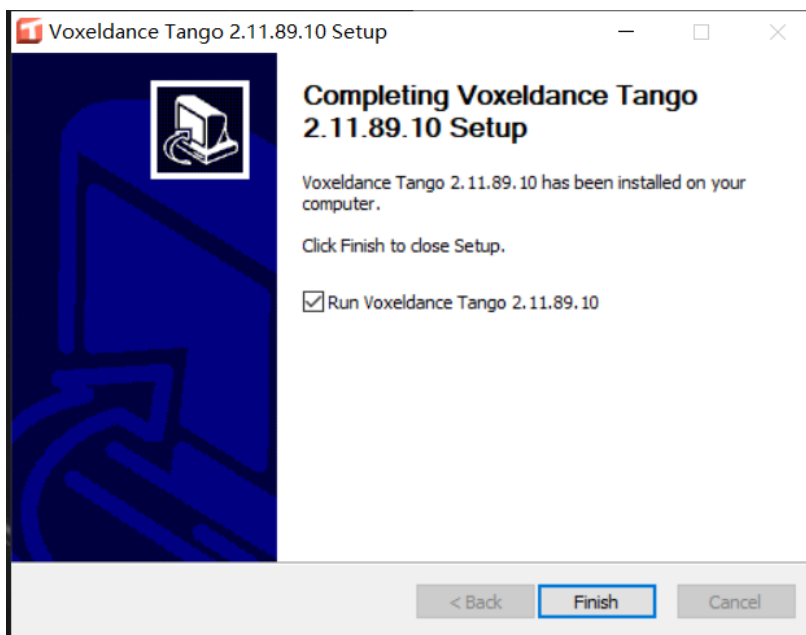
6. Choose the components to install (all selected by default). Click Next to continue.



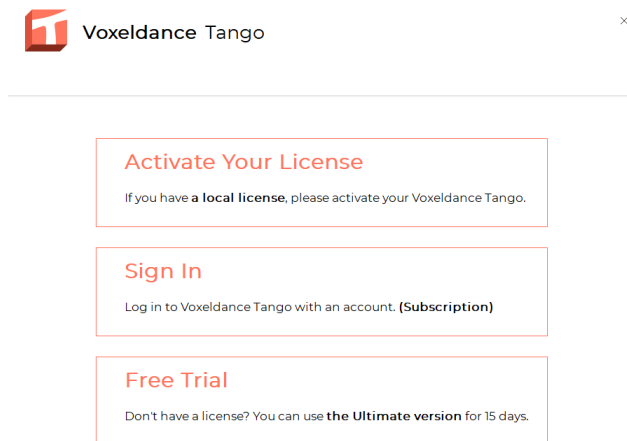
7. Enter or select the folder you want to install. Click Next to continue.



8. Click Finish to complete the installation and exit the wizard. Select the checkbox to launch Tango automatically.



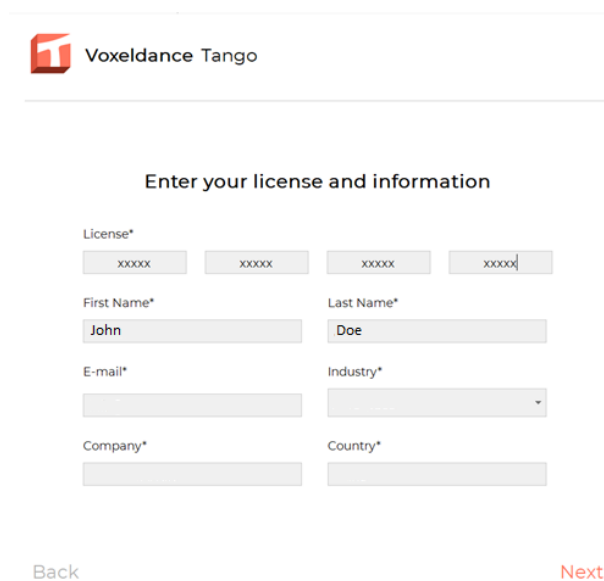
9. After you have launched Tango, you need to activate the software. Click on Activate Your License.



The screenshot shows a window titled "Voxeldance Tango" with a close button (X) in the top right corner. The window contains three main sections, each with a red border and a red heading:

- Activate Your License**: "If you have a **local license**, please activate your Voxeldance Tango."
- Sign In**: "Log in to Voxeldance Tango with an account. (**Subscription**)"
- Free Trial**: "Don't have a license? You can use **the Ultimate version** for 15 days."

10. Enter the license key that is provided in your onboarding email from Structo. Enter the other mandatory details to help us understand your industry better and provide a better customer experience.



The screenshot shows a window titled "Voxeldance Tango" with a close button (X) in the top right corner. The window contains a form titled "Enter your license and information" with the following fields:

- License***: Four input boxes, each containing "xxxxx".
- First Name***: Input box containing "John".
- Last Name***: Input box containing "Doe".
- E-mail***: Empty input box.
- Industry***: Dropdown menu.
- Company***: Empty input box.
- Country***: Empty input box.

At the bottom of the form, there are two buttons: "Back" and "Next".

Tango will validate the license key, and after the validation is completed, you can start working with Tango for your file preparation.